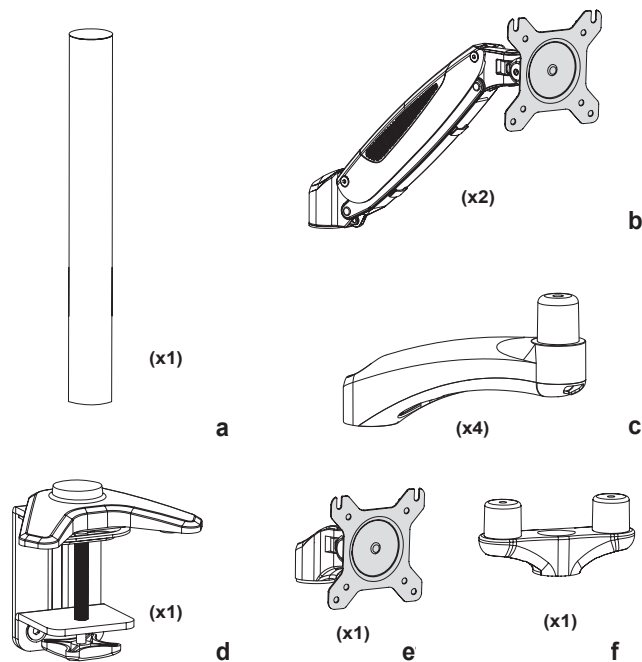











PLEXGEAR.

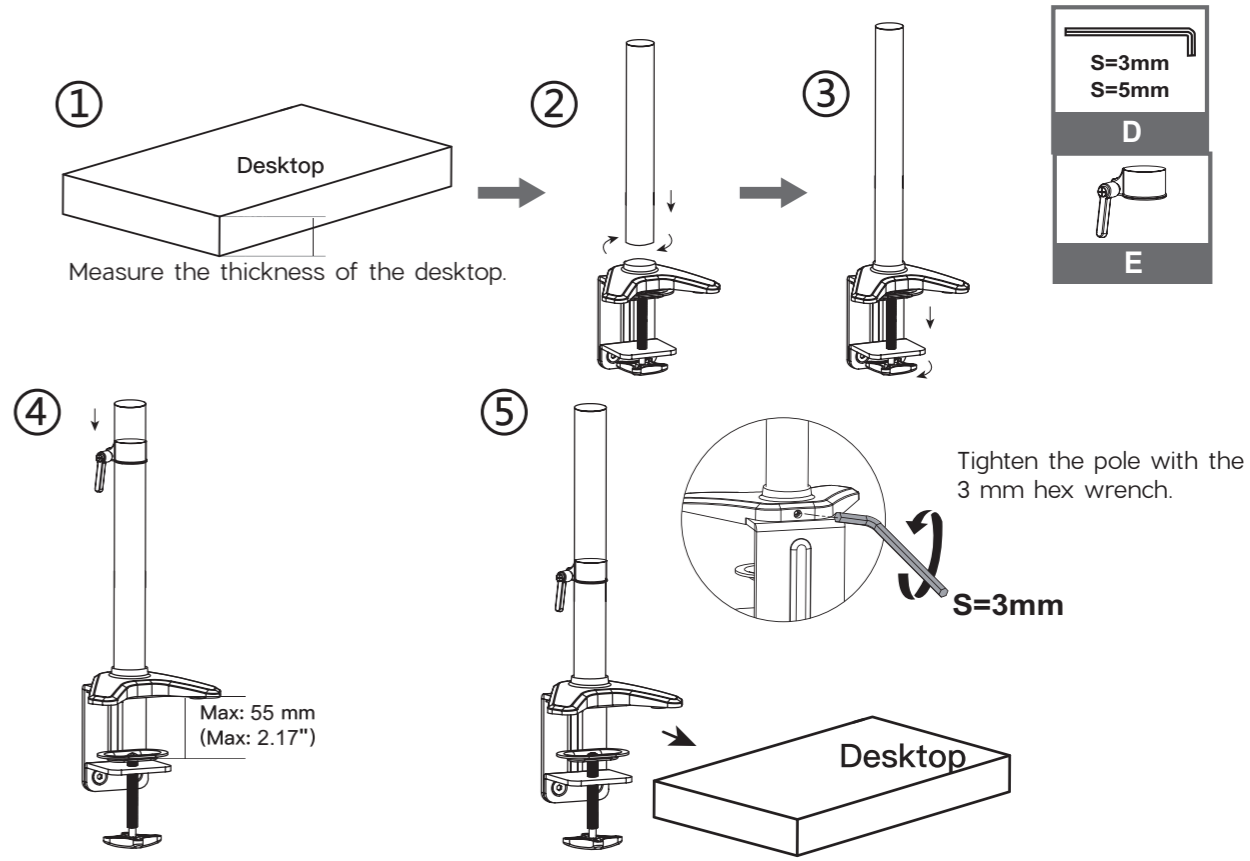
TRIPLE MONITOR MOUNT

MM108

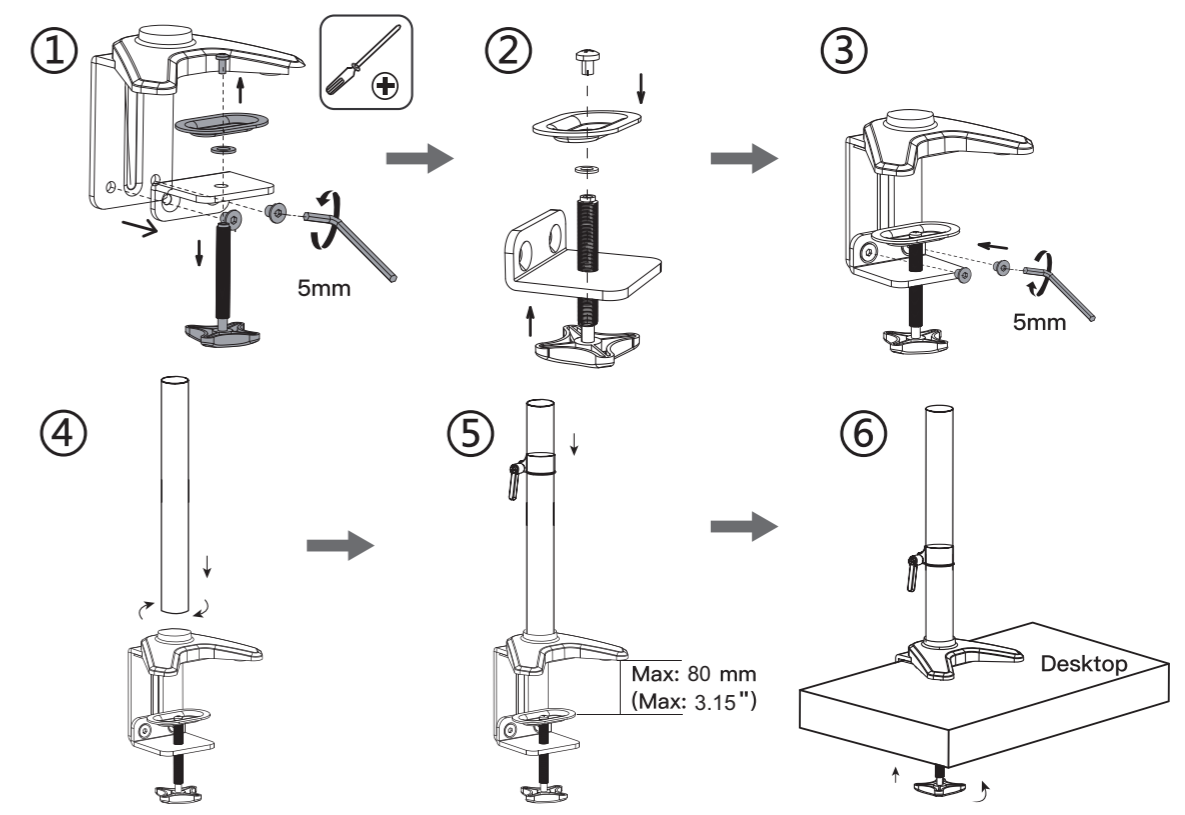


A	 M4x12 (x12)	 M4x30 (x12)
B	 12X5.8X16 (x12)	 (x2)
C	 M6x25 (x6)	 (x6)
D	 S=3mm (x1)	 S=5mm (x1)
E	 (x2)	

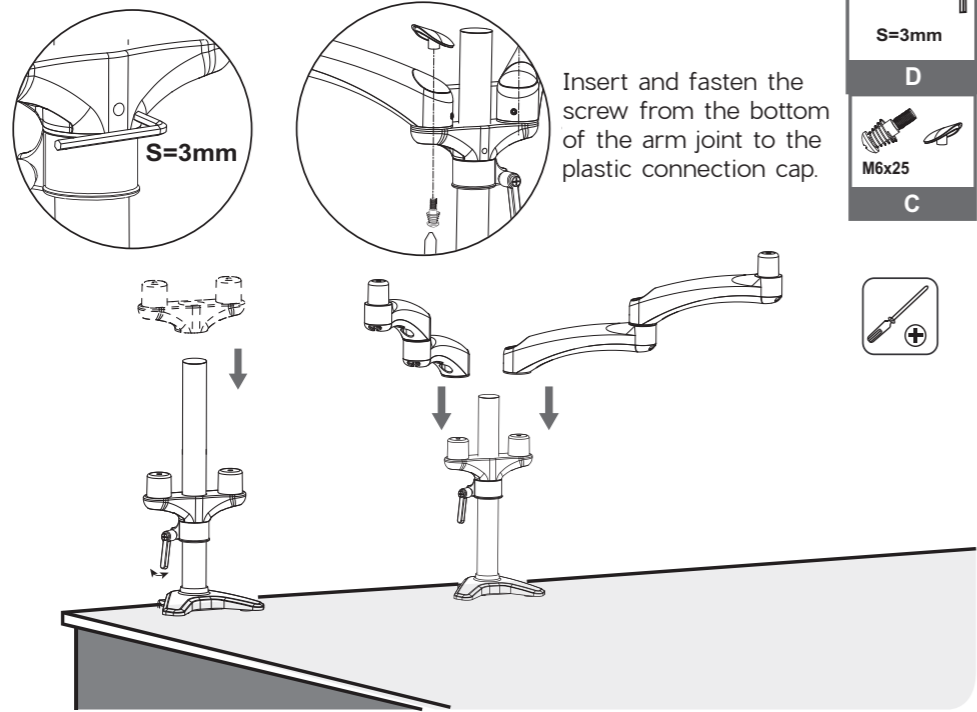
1



For desks with a thickness between 55-80 mm, remove the clamp screw and attachment entirely and reattach the clamp screw with the bottom plate upside down.



2

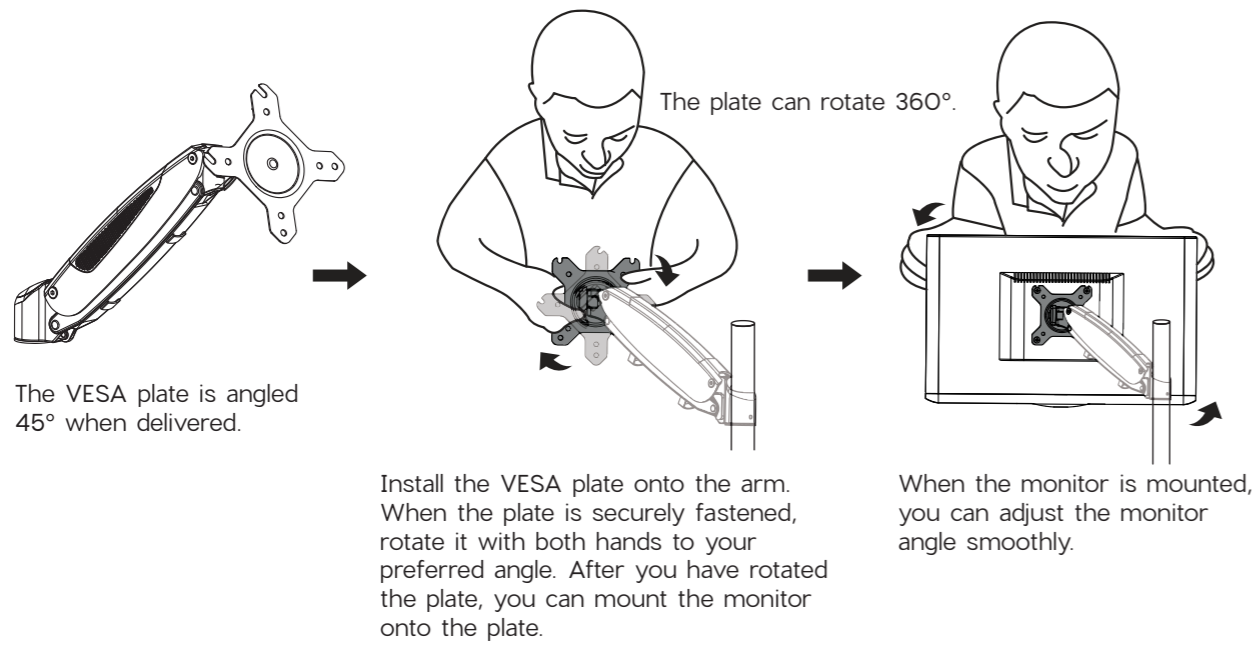


Insert and fasten the screw from the bottom of the arm joint to the plastic connection cap.

- S=3mm
- D
- M6x25
- C



3



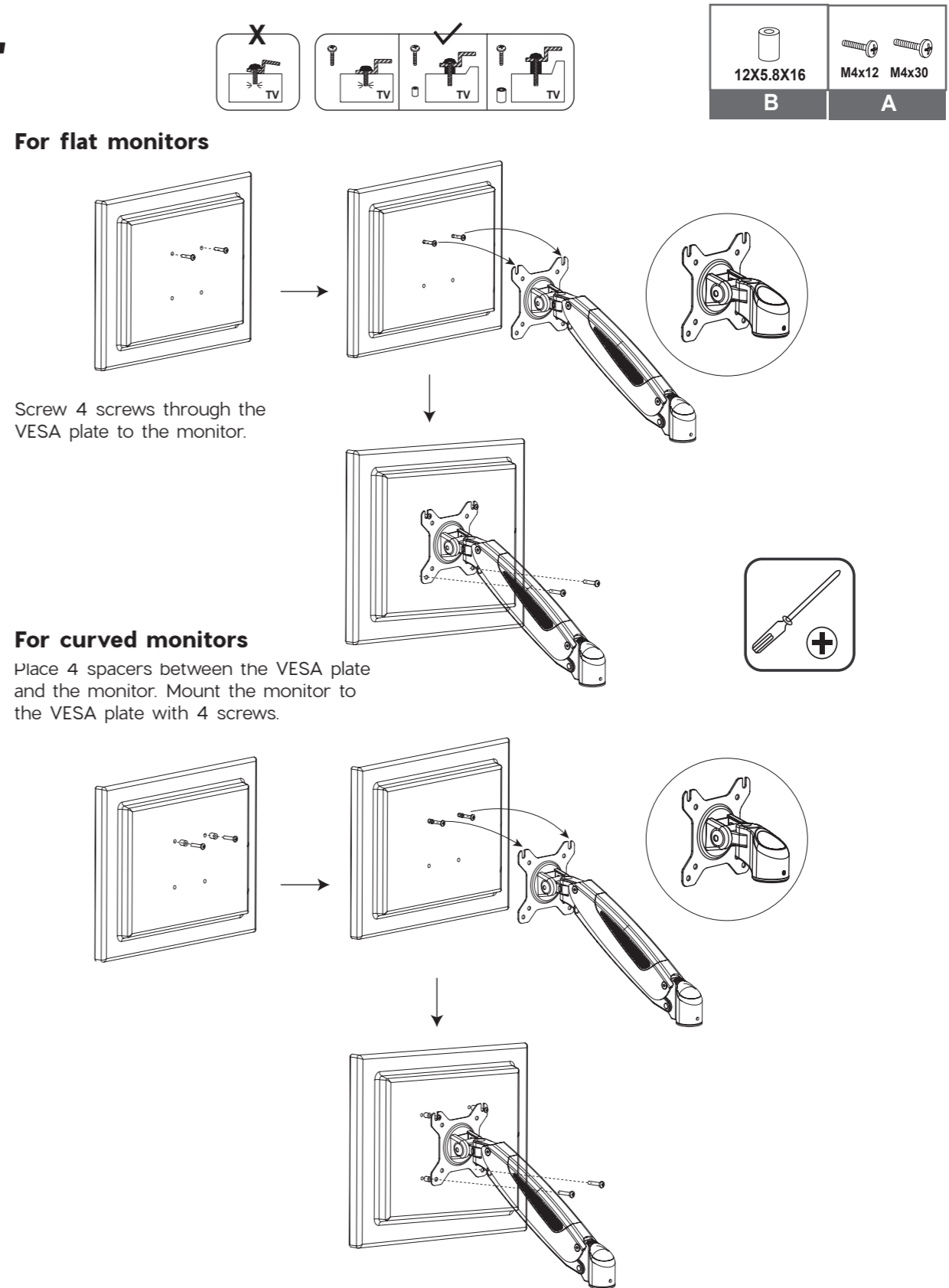
The VESA plate is angled 45° when delivered.

The plate can rotate 360°.

Install the VESA plate onto the arm. When the plate is securely fastened, rotate it with both hands to your preferred angle. After you have rotated the plate, you can mount the monitor onto the plate.

When the monitor is mounted, you can adjust the monitor angle smoothly.

4



For flat monitors

Screw 4 screws through the VESA plate to the monitor.

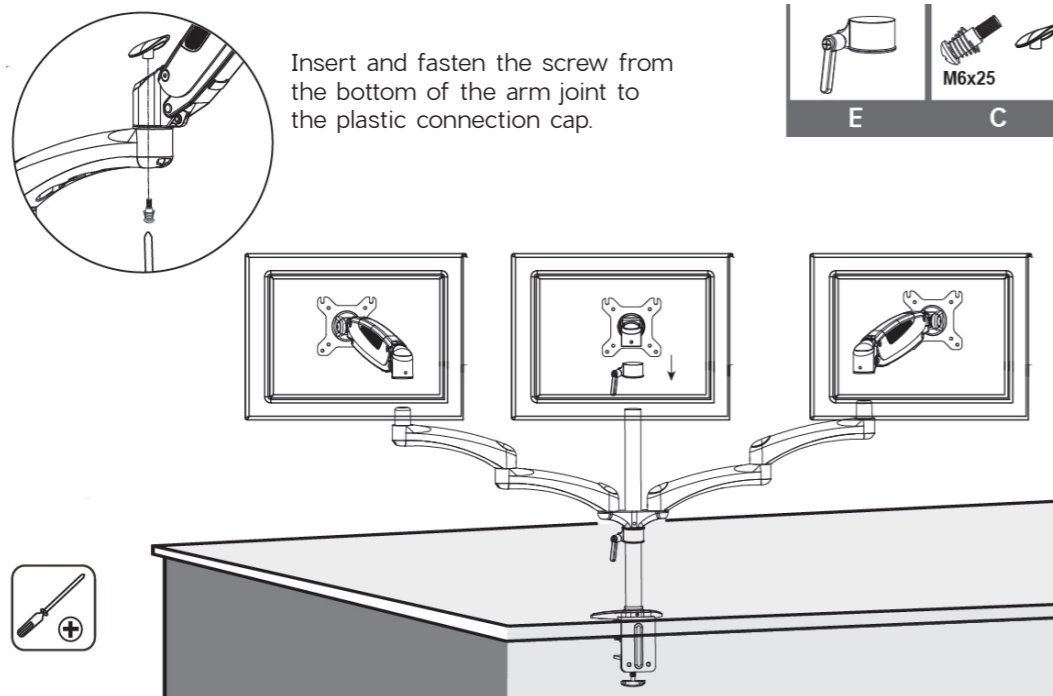
For curved monitors

Place 4 spacers between the VESA plate and the monitor. Mount the monitor to the VESA plate with 4 screws.

- 12X5.8X16
- M4x12 M4x30
- B
- A

5

Lift the spring arm with the monitors and place it on the desk mount.

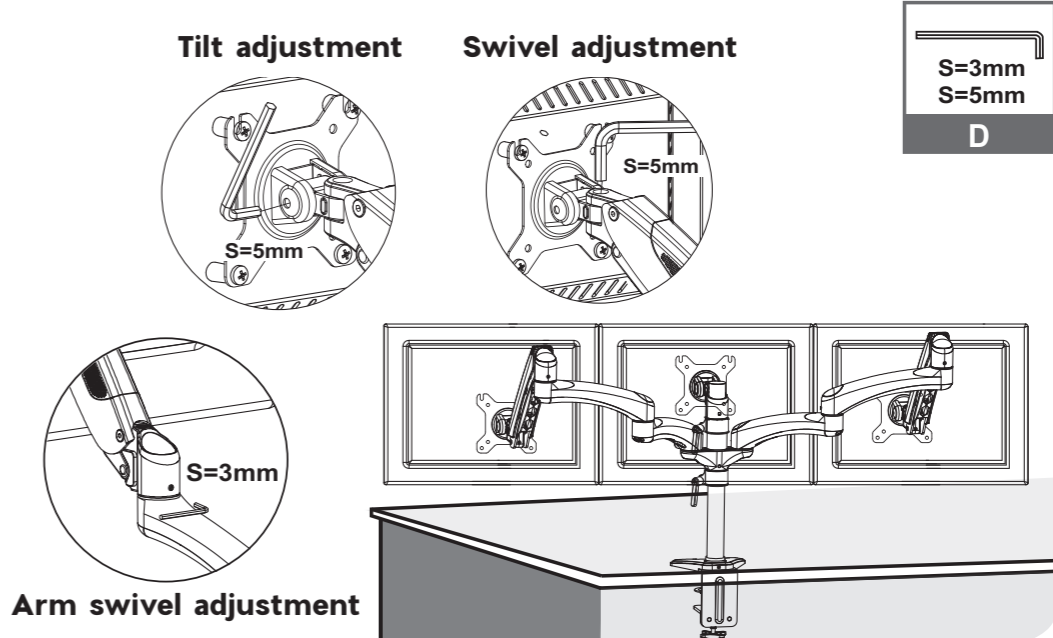


Insert and fasten the screw from the bottom of the arm joint to the plastic connection cap.



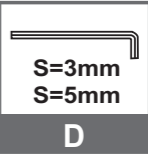
7

Use the hex wrench to adjust the tilt and swivel.



Tilt adjustment

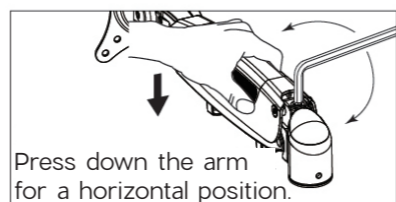
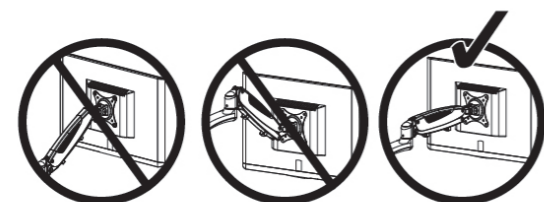
Swivel adjustment



Arm swivel adjustment

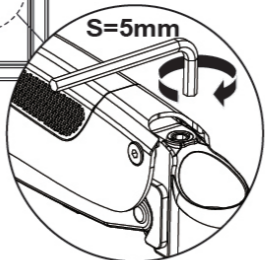
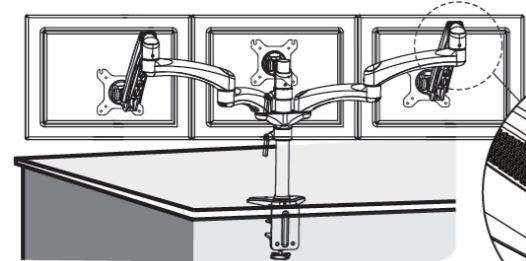
6

Depending on the weight of the monitor, the tension needs to be adjusted. Use a hex wrench to adjust the height tension of the spring arm.



Press down the arm for a horizontal position.

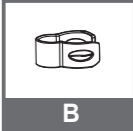
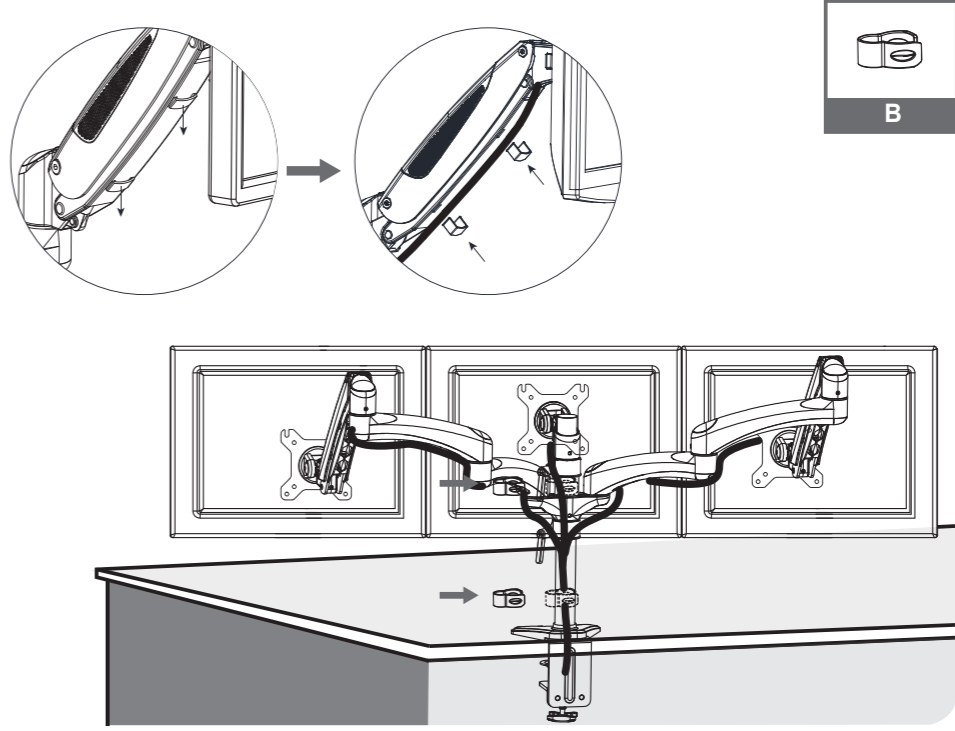
Make sure to keep the arm horizontal during adjustment.



Note! Use the hex wrench and screw clockwise to reduce the tension for lighter monitors. Screw counter clockwise to increase the tension for heavier monitors.

8

Place the cables along the pole and fasten them with the cable clips.



Safety information

Do not use with heavier products than the rated weights.

The desk clamp can support a maximum desk thickness of 80 mm.

Make sure the supporting surface safely supports the combined weight of the mount and the monitors.

Do not install on a surface that is prone to vibration or movement.

Use the provided screws and do not overtighten them.

The product includes small parts that can be a choking hazard if swallowed. Keep away from children.

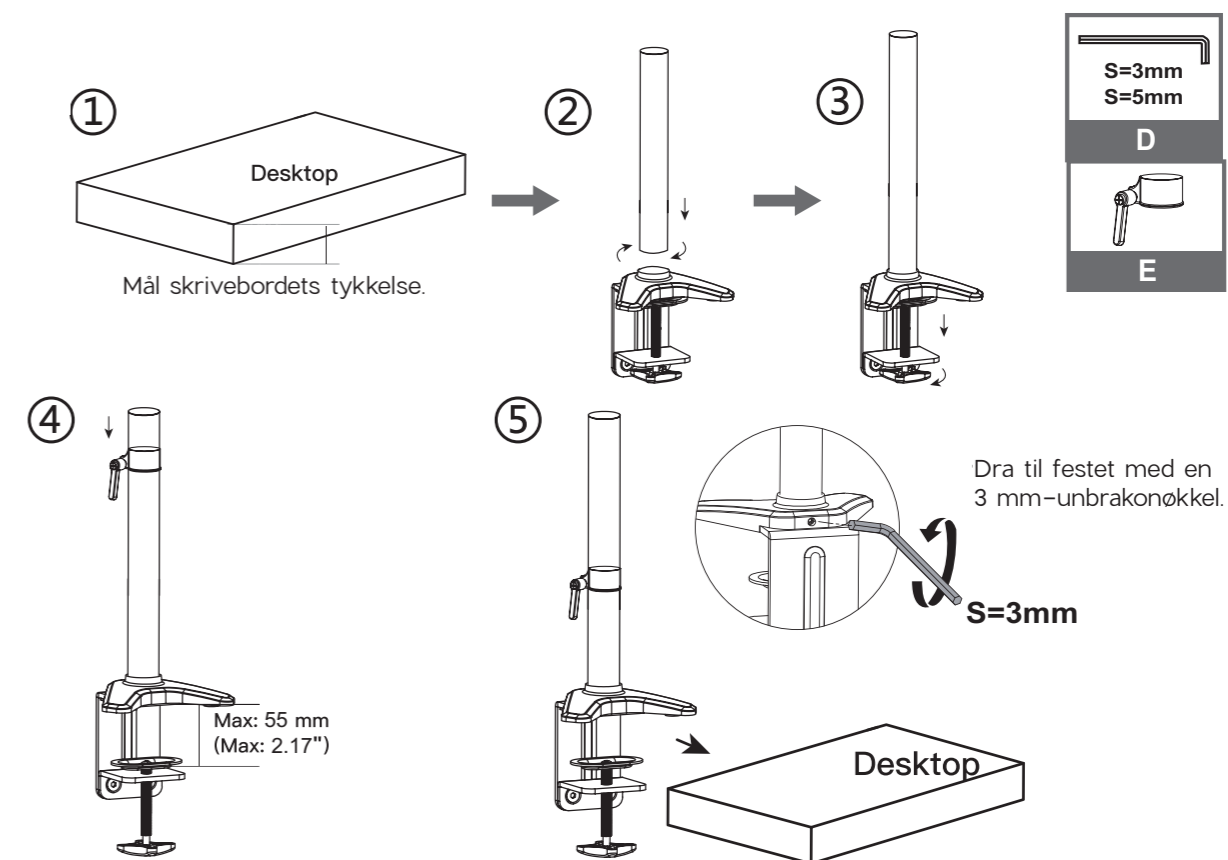
Check that the bracket is secure every third month.

Indoor use only.

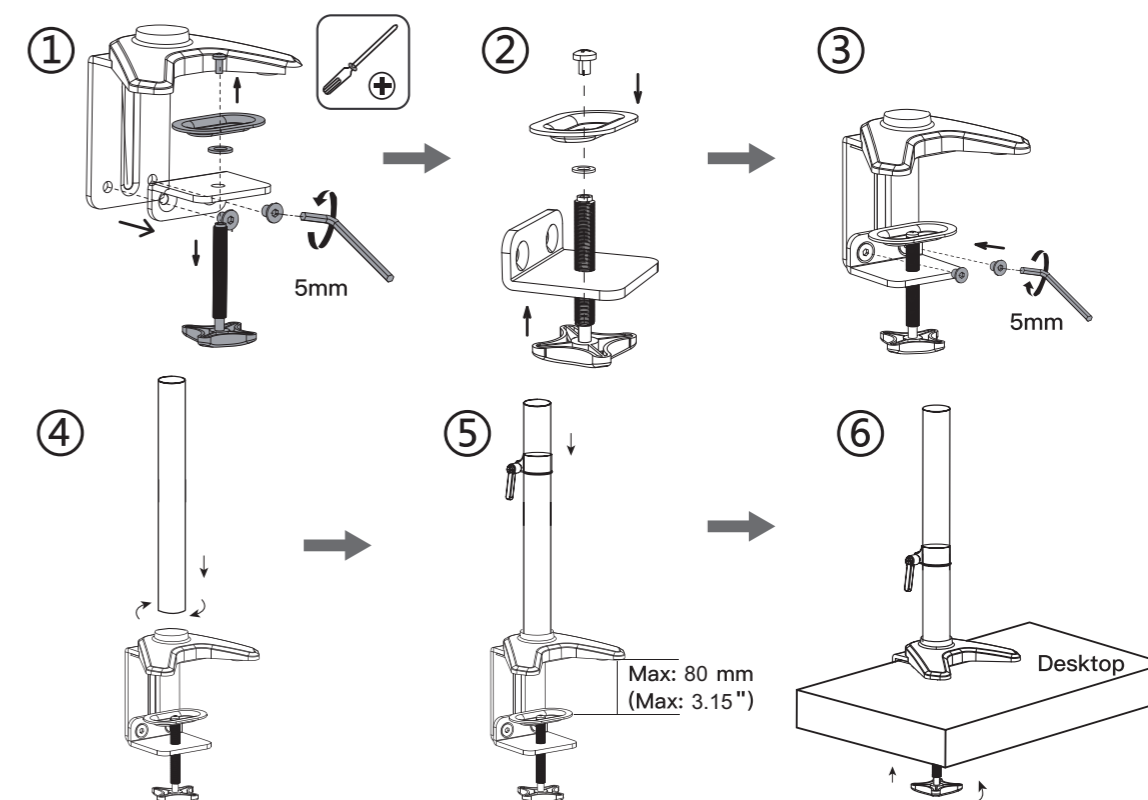
Specifications

Material:	Aluminium and iron
Screen sizes:	13–32"
Weight capacity:	3x 8 kg
VESA compatibility:	75x75 mm, 100x100 mm
Tilt range:	-90° to +85°
Swivel range:	180°
Monitor rotation (pivot):	360°
Desktop thickness:	Up to 80 mm

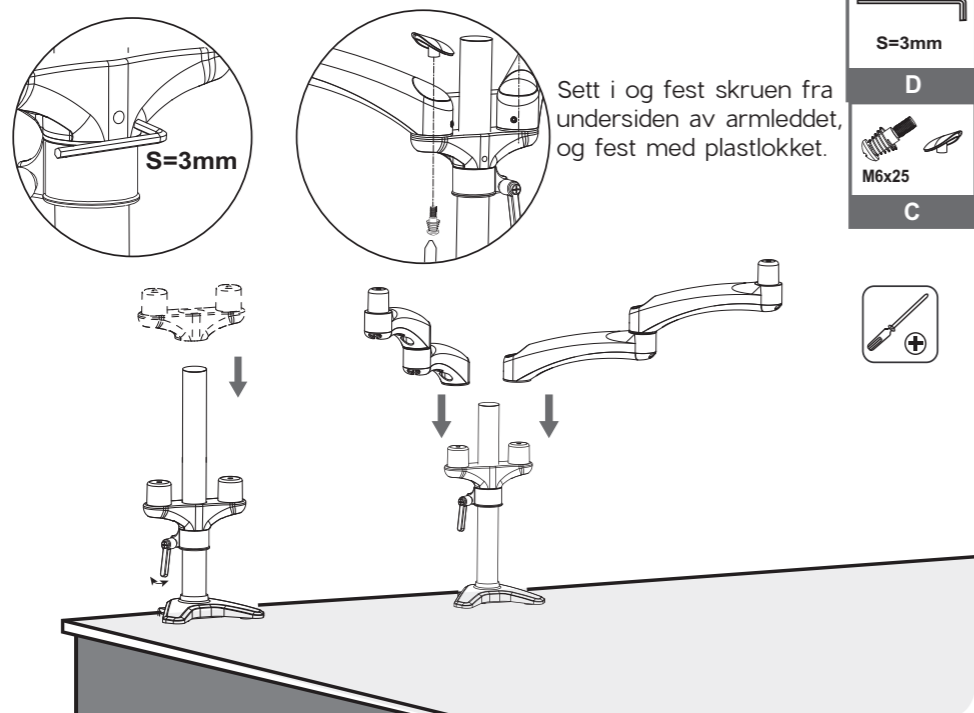
1



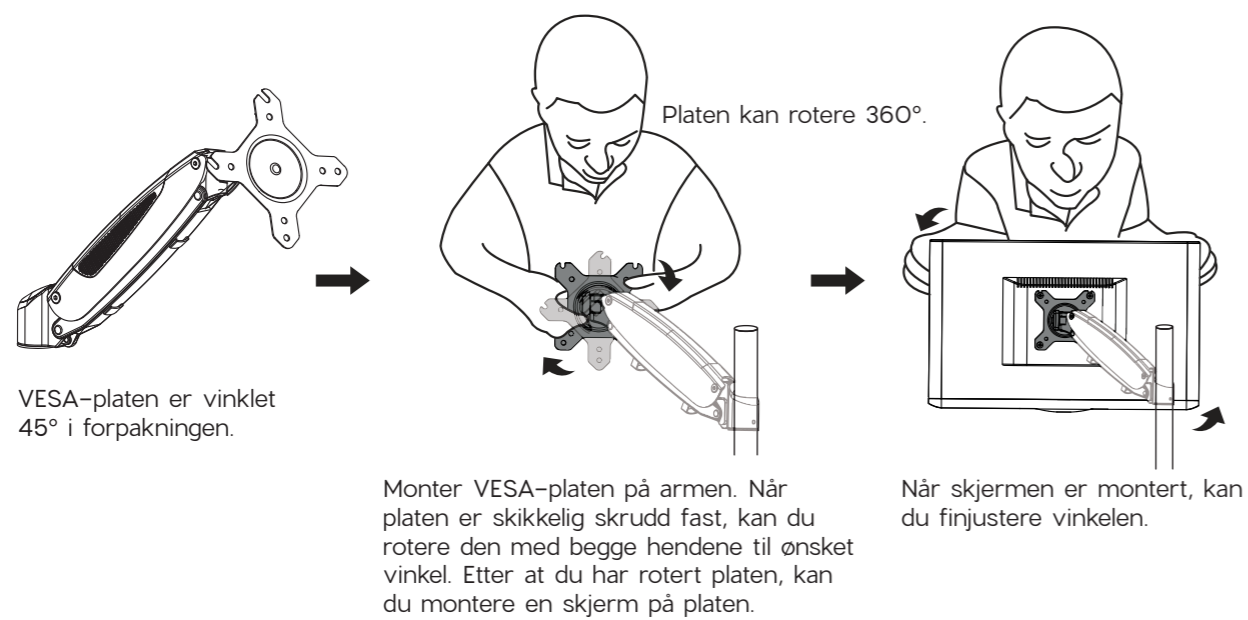
På skrivebord med tykkelse mellom 55 og 80 mm tar du av klemmeskruen og festet helt og setter tilbake klemmeskruen med bunnplaten opp ned.



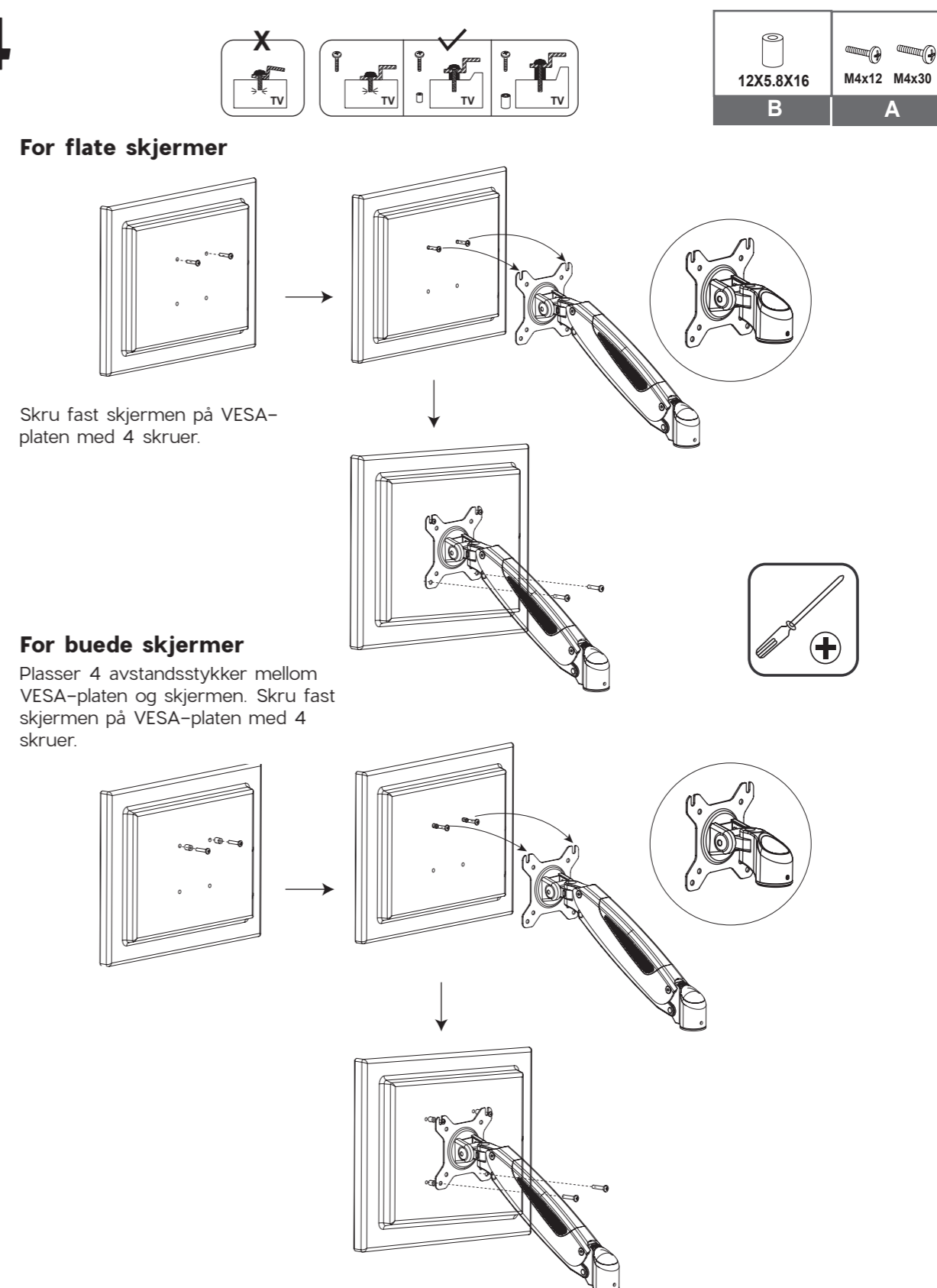
2



3

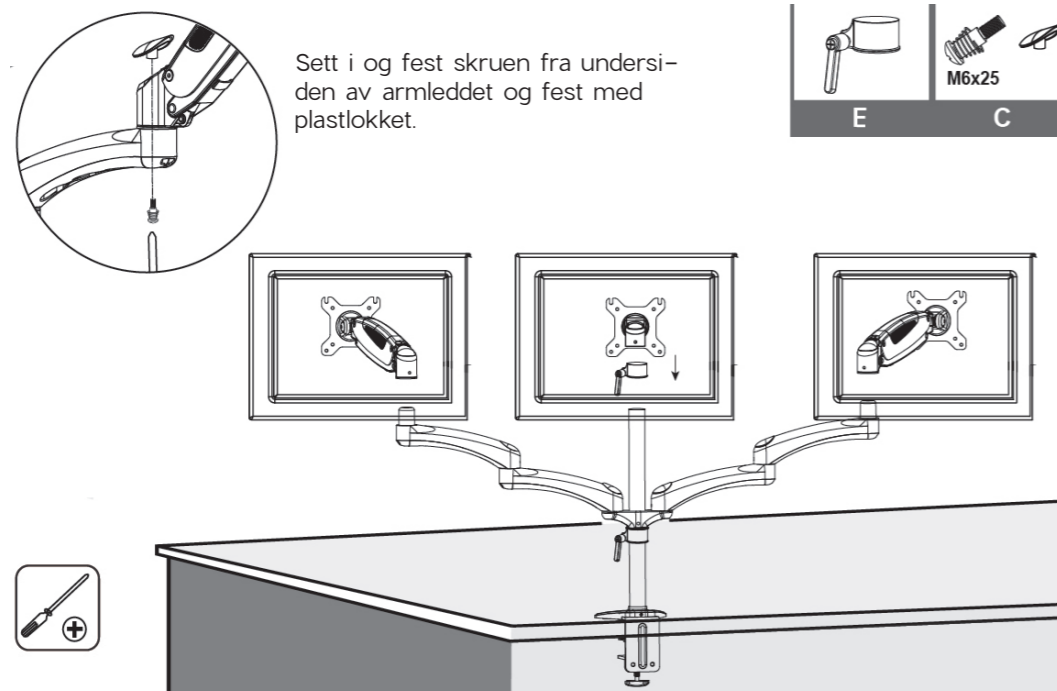


4



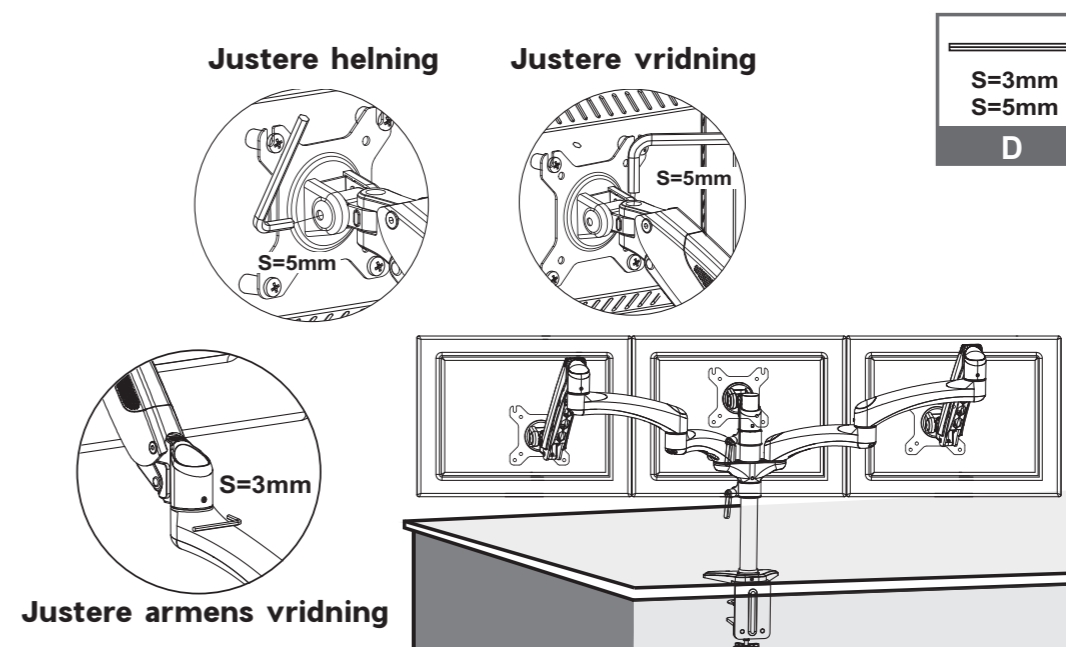
5

Løft fjæringsarmen med skjermene og plasser den på skrivebordsfestet.



7

Bruk unbrakonøkkelen til å justere helning og vridning.



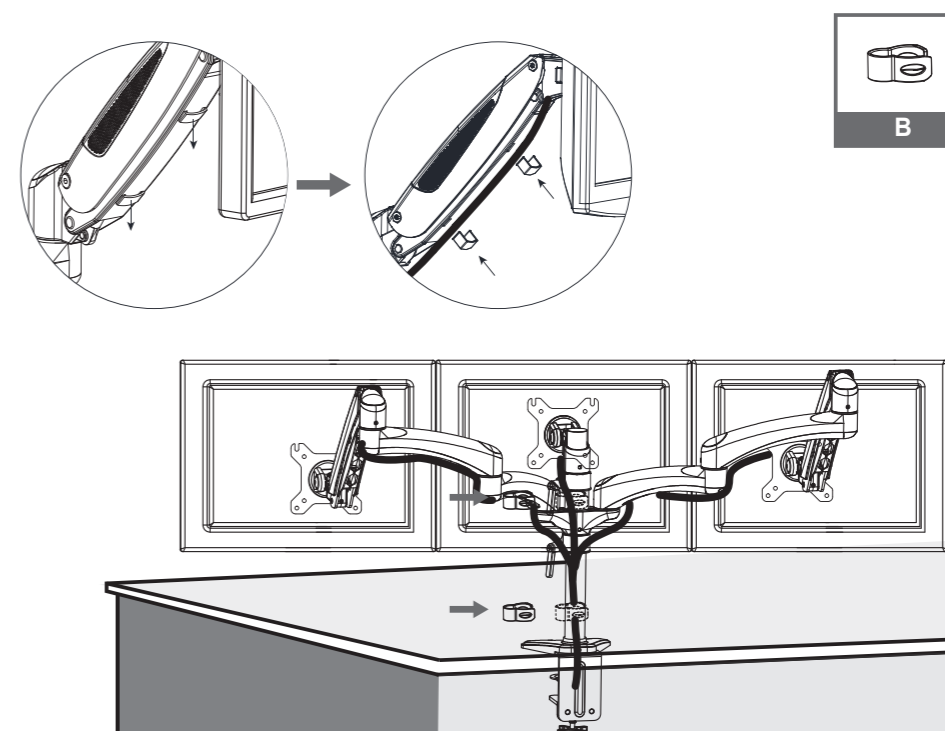
6

Armens spenning kan måtte justeres avhengig av skjermens vekt. Bruk en unbrakonøkkel til å justere armens høydespenning.



8

Før kablene langs med festet og fest dem med kabelklemmene.



Sikkerhetsinformasjon

Ikke heng tyngre produkter på festet enn det som er oppgitt.

Skrivebordsklemmen støtter en maksimal skrivebordstykkelse på 80 mm.

Se til at veggen kan bære den kombinerte vekten av festet og skjermen.

Ikke monter festet på en overflate som er følsom for vibrasjoner eller bevegelse.

Bruk de medfølgende skruene, og ikke skru dem til for hardt.

Produktet inneholder små deler som kan utgjøre en kvelerisiko ved svelging. Hold dem utenfor barns rekkevidde.

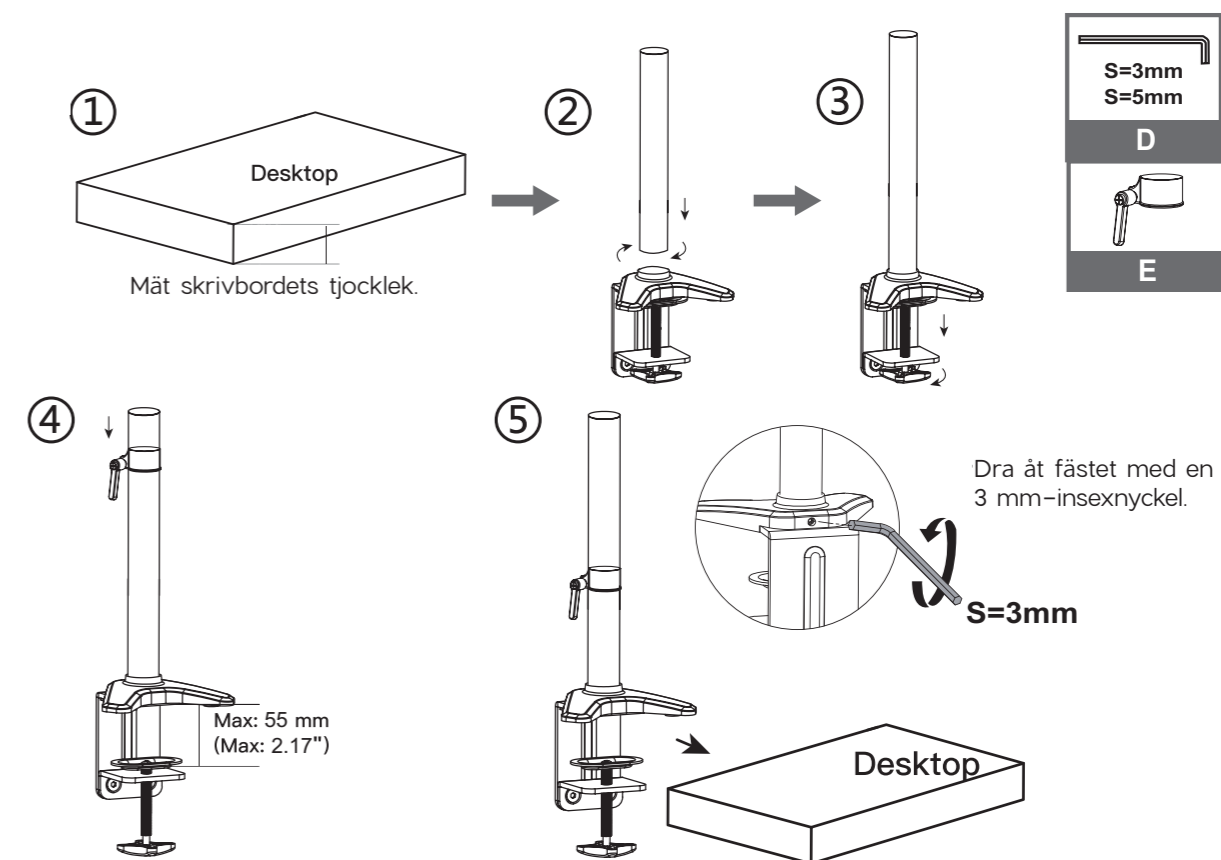
Kontroller hver tredje måned at festet sitter skikkelig.

Bare for innendørsbruk.

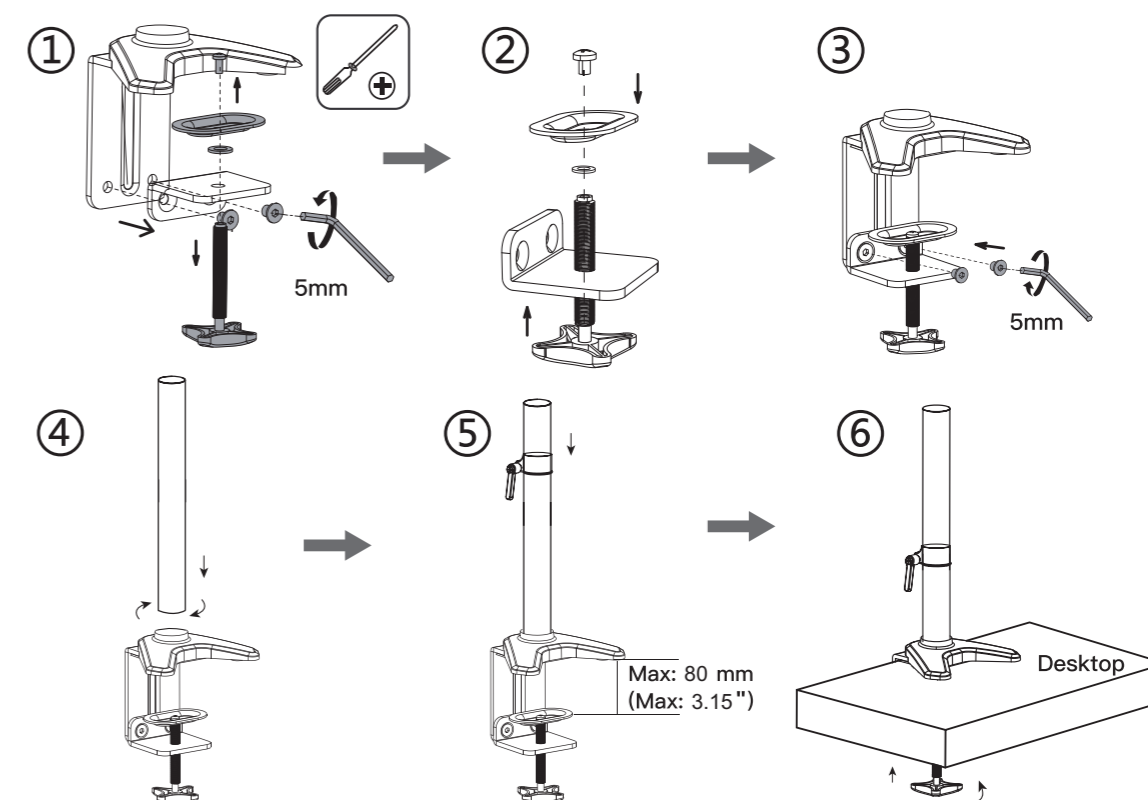
Spesifikasjoner

Materiale:	Aluminium og jern
Egnede skjermstørrelser:	13–32"
Vektkapasitet:	3x 8 kg
VESA-kompatibilitet:	75x75 mm, 100x100 mm
Helning (tilt):	-90° til +85°
Vannrett rotasjon (swivel):	180°
Lodrett rotasjon (pivot):	360°
Skrivebordstykkelse:	Opptil 80 mm

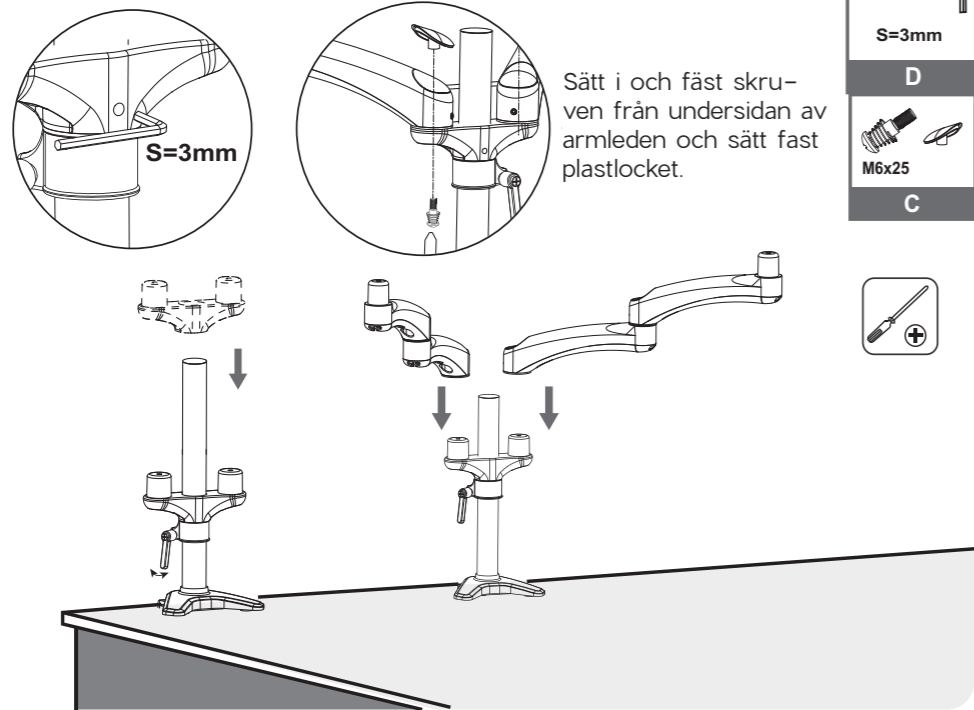
1



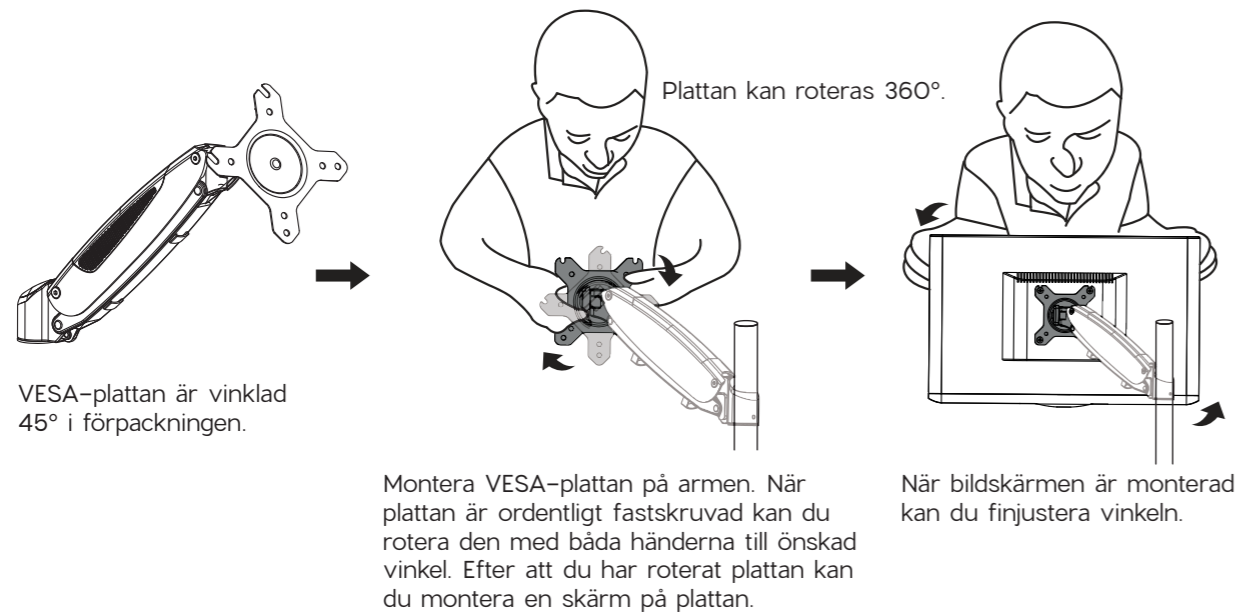
För skrivbord med en tjocklek mellan 55–80 mm tar du av klämskruven och fästet helt och sätter tillbaka klämskruven med bottenplattan upp och ner.



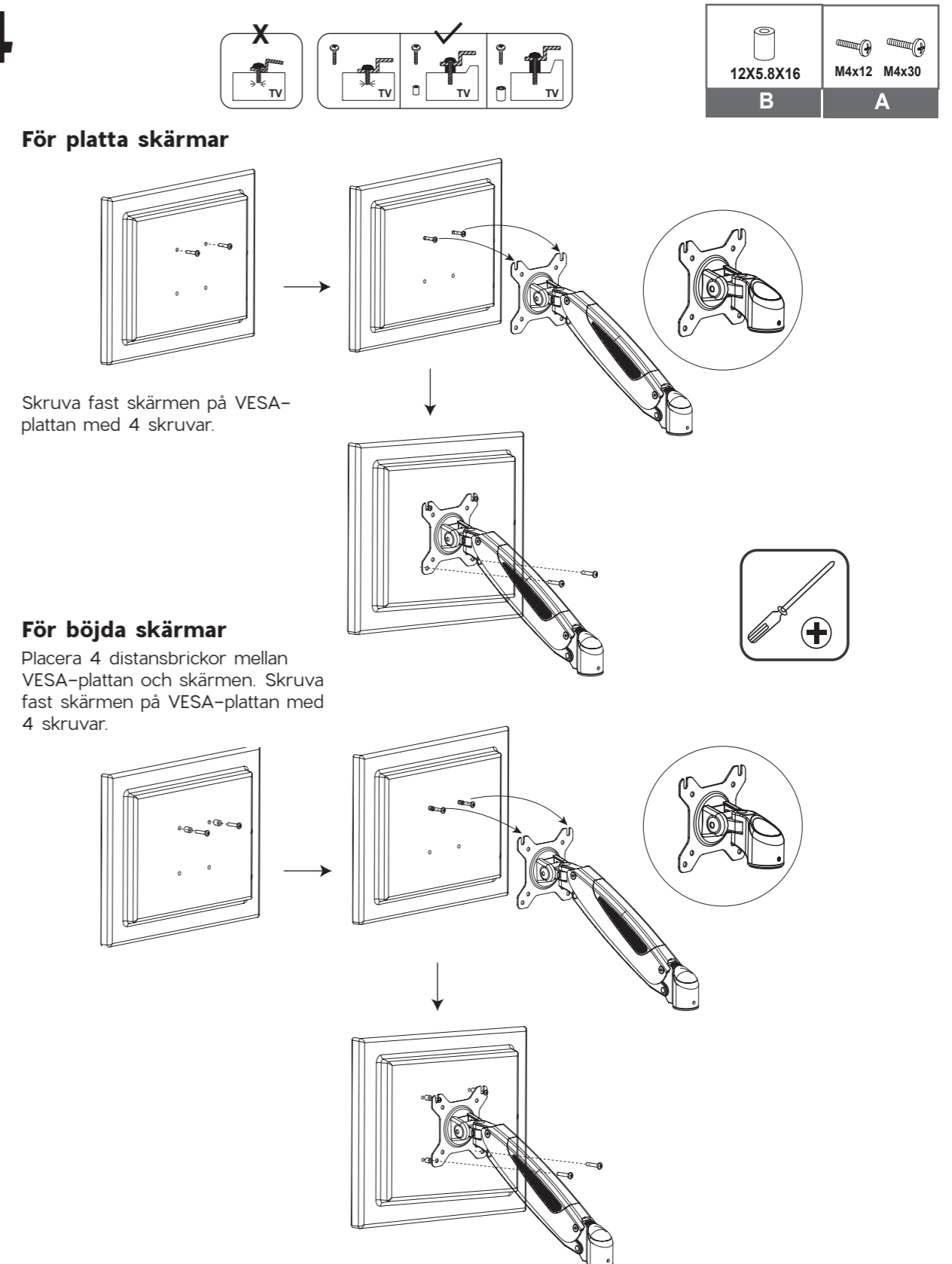
2



3

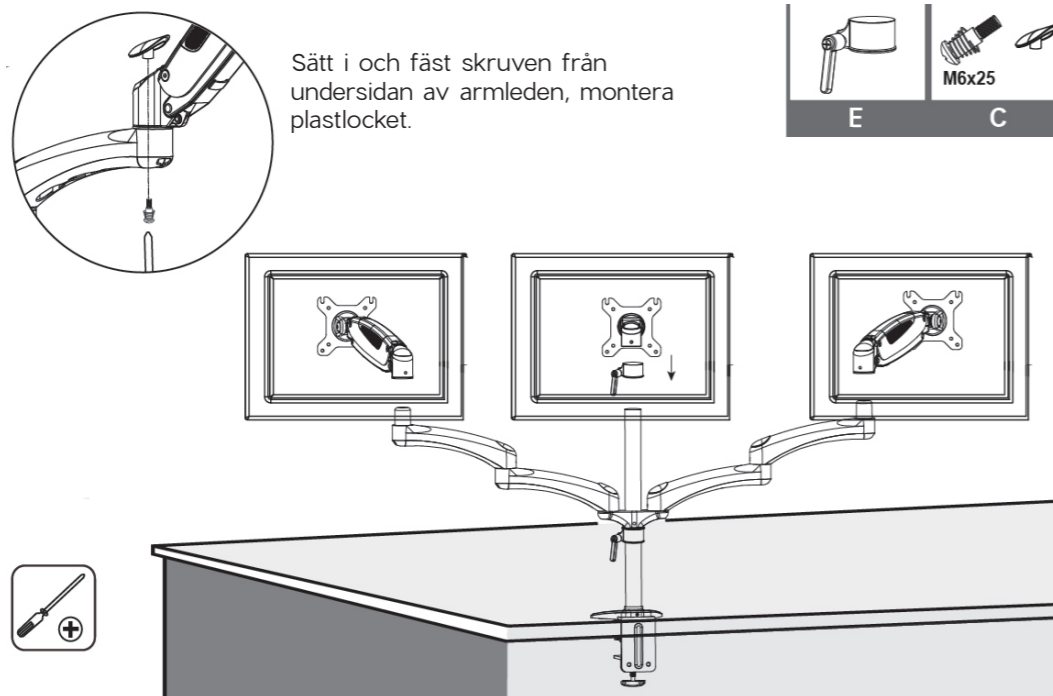


4



5

Lyft armen med skärmarna och montera den i skrivbordsfästet.

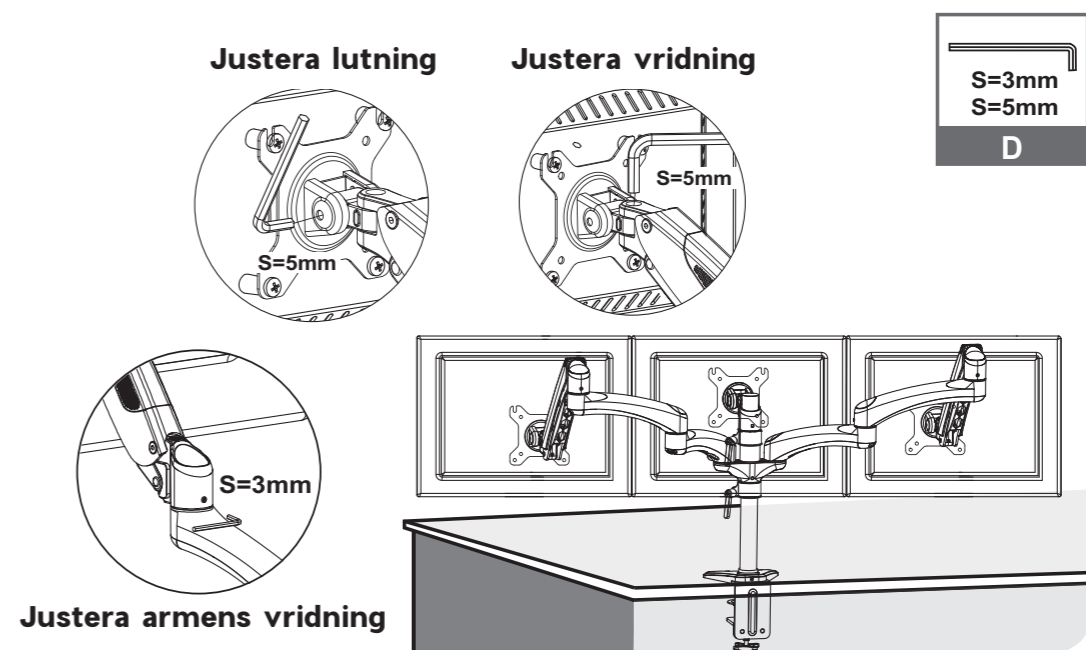


Sätt i och fäst skruven från undersidan av armleden, montera plastlocket.



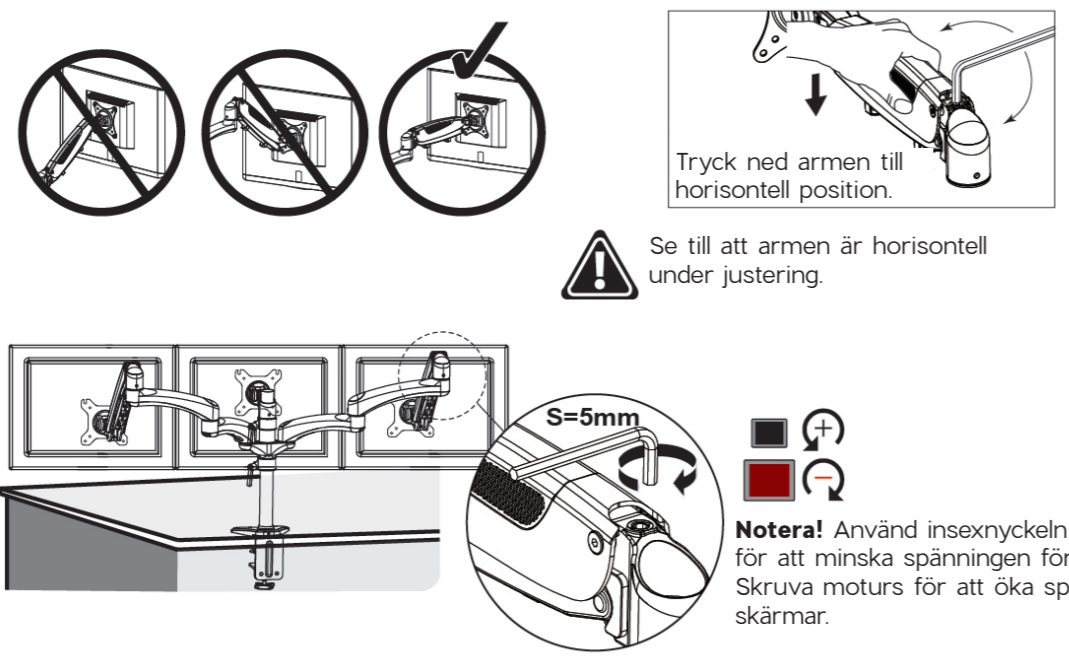
7

Använd insexnyckeln för att justera lutning och vridning.



6

Armens spänning kan behöva justeras beroende på skärmens vikt. Använd en insexnyckel för att justera armens höjdsänning.



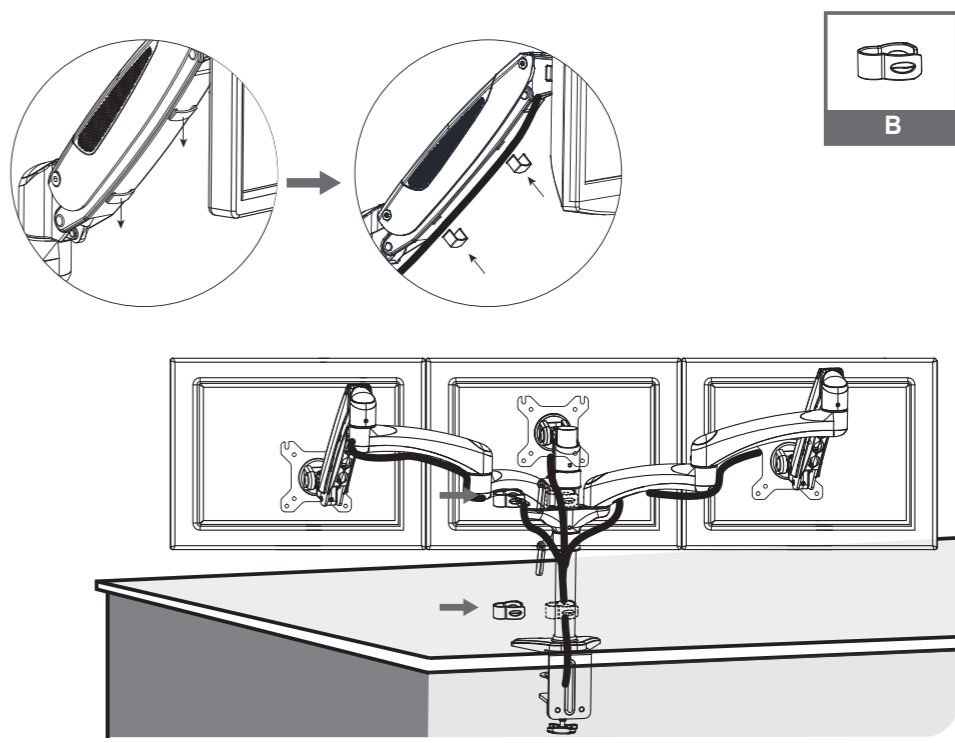
Tryck ned armen till horisontell position.

Se till att armen är horisontell under justering.

Notera! Använd insexnyckeln och skruva medurs för att minska spänningen för lättare bildskärmar. Skruva moturs för att öka spänningen för tyngre skärmar.

8

Dra kablarna längs med fästet och fäst dem med kabelklämmorna.



Säkerhetsinformation

Häng inte fast tyngre produkter på fästet än vad som är angivet.

Skrivbordsklämman stöder en maximal skrivbordstjocklek på 80 mm.

Se till att stödytan säkert kan bära den kombinerade vikten av fästet och skärmen.

Montera inte fästet på en yta som är känslig för vibrationer eller rörelse.

Använd medföljande skruvar och dra inte åt dem för hårt.

Produkten innehåller små delar som kan utgöra en kvävningrisk vid förtäring. Håll dem borta från barn.

Kontrollera var tredje månad att fästet sitter säkert.

Endast för inomhusbruk.

Specifikationer

Material:	Aluminium och järn
Lämplig skärmstorlek:	13–32"
Viktkapacitet:	3x 8 kg
VESA-kompatibilitet:	75x75 mm, 100x100 mm
Lutning (tilt):	-90° till +85°
Vågrät rotation (swivel):	180°
Lodrät rotation (pivot):	360°
Skrivbordets tjocklek:	Upp till 80 mm

