

# TECHNICAL DATASHEET

## NORDMAX BIFACIAL FLEXIBEL SOLAR PANEL NM60FLBI



### Electrical data

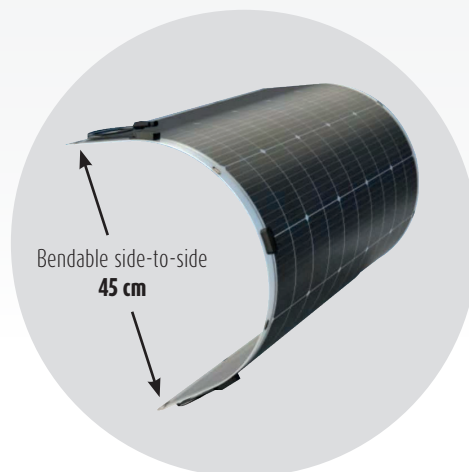
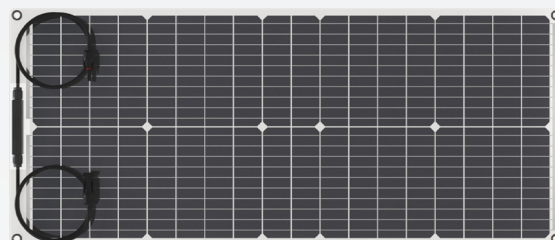
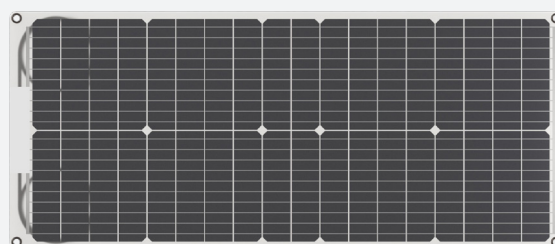
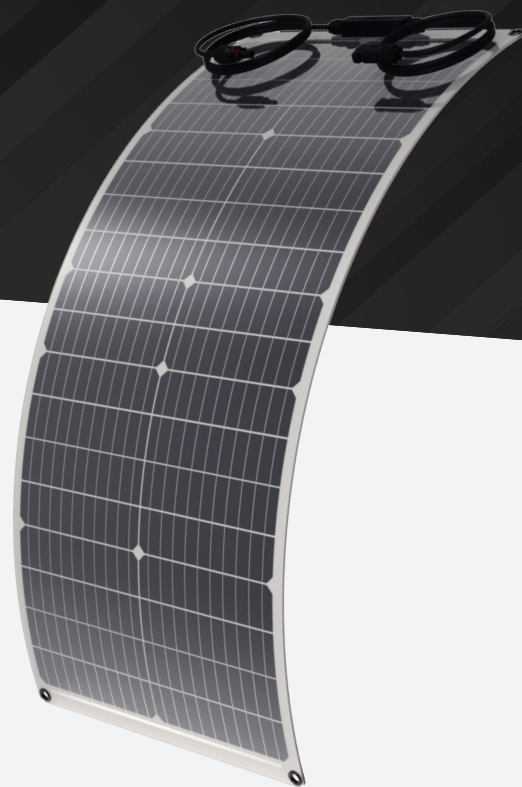
Power	<b>60 W</b>
Tolerance	<b>-5 to +10 %</b>
Open circuit voltage (Voc)	<b>24,21 V</b>
Short circuit current (Isc)	<b>3,1 A</b>
Maximum power voltage (Vmp)	<b>20,52 V</b>
Maximum power current (Imp)	<b>2,92 A</b>
Solar cell efficiency	<b>22,6 %</b>
Series fuse rating	<b>4,65 A</b>
Maximum system voltage	<b>1 000 V</b>

### General data

Number of cells	<b>10</b>
Cell type	<b>Monocrystalline</b>
Operating temperature	<b>-40° till +85°</b>
Connection	<b>0,9m cable + MC4</b>
Terminal box IP rating	<b>IP67</b>
Material	<b>Transparent flame resistant FR-4</b>
Bendable side-to-side	<b>45 cm</b>

### Dimensions & weight

Length	<b>910 mm</b>
Width	<b>390 mm</b>
Height	<b>3 mm</b>
Weight	<b>1,35 kg</b>



# NORDMAX™